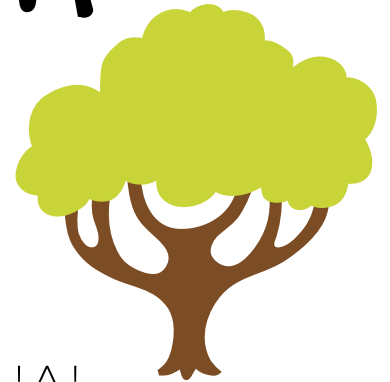


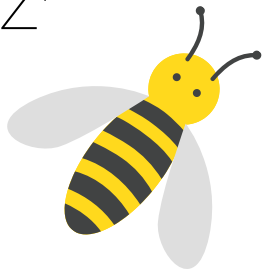
# ALPHABET WALK

## INSTRUCTIONS:

Go for a walk- Take your family with you!



Spot something that starts with the letter 'A'.  
Continue through the whole alphabet until you get  
to 'Z'



If you cant find something that start with a letter, try  
finding something that contains the letter. Some  
may be a bit tricky to find!



NORWICH  
SCHOOL SPORT PARTNERSHIP